



initial[™] LiSi

A HIGHLY AESTHETIC VENEERING CERAMIC FOR LITHIUM DISILICATE SUBSTRUCTURES

GC

INTRODUCING

initial LiSi



Restoration courtesy of Al Hodges CDT, DTG



THE NEWEST AND MOST HIGHLY AESTHETIC VENEERING CERAMIC FOR LITHIUM DISILICATE SUBSTRUCTURES

GC Initial LiSi is an amazing new layering ceramic for Lithium Disilicate substructures. For the first time ever, Initial LiSi offers the highest aesthetics, perfectly matched CTE, and is a more cost effective option for your most popular restorations.

GC Initial LiSi, is a new member of the popular ceramic line of Initial. This new ceramic is a specialized veneering ceramic designed for lithium disilicate frameworks. With these types of frameworks gaining popularity, GC now offers a material for highly aesthetic and durable restorations for long-term patient satisfaction.



Restorations courtesy of Mitch Hurst CDT, DTG

Thanks to the exact cross-matched coefficients of thermal expansion (CTE), its low firing temperature, and high stability during multiple firings, GC Initial LiSi ensures you safe and predictable processing of lithium disilicate frameworks.

GC Initial LiSi can be used in the individual layering and in the cut-back technique following the proven Initial ceramic concept; one shade system; one layering technique. If you want to go even further, full anatomical frameworks can be enhanced using the GC Initial IQ Lustre Pastes NF. The simplicity and easy handling of the GC Initial LiSi powders assure a short learning curve offering quick, aesthetic and economical results.

FEATURE & BENEFITS

FINALLY! A LAYERING CERAMIC FOR LITHIUM DISILICATE RESTORATIONS WITH AESTHETICS TECHNICIANS DEMAND

- Superior natural aesthetics that are specially designed and adapted to the light-dynamics of lithium disilicate frameworks
- Low firing temperature and exact cross-matched coefficients of thermal expansion with high stability, even after multiple firings
- Comprehensive shade and layering system
- Simple handling and short learning curve



CUT BACK



WASH



FIRST BAKE



TEXTURE/STAIN
GLAZE/CORRECTION

Restorations courtesy of Joshua Polansky

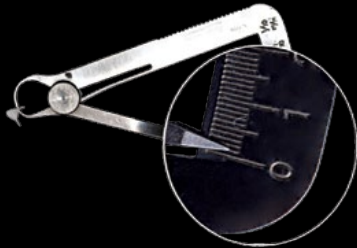
ROBUST & STABLE



OPTIMIZED, STABLE AND NATURAL AESTHETICS

GC Initial LiSi is a Feldspar based ceramic with an optimized crystal structure. This results in more natural optical effects and a much higher stability offering superior natural aesthetics. Low firing temperature and exactly cross-matched coefficients of thermal expansion with high stability, even after multiple firings!

EXTREMELY THIN COPING



1ST FIRING



8TH FIRING



Restorations courtesy of Jim Redden, CDT, DTG

Restoration fired 8 times at 750c on a very thin lithium disilicate coping. No cracking. No drop in value!



Restorations courtesy of Al Hodges CDT, DTG

GC Initial LiSi



IPS e.max Ceram†



Restorations courtesy of Joshua Polansky

HIGHEST AESTHETICS

SPECIALLY DESIGNED AND ADAPTED
TO THE LIGHT-DYNAMICS OF LITHIUM DISILICATE FRAMEWORKS



Restoration courtesy of Bill Marais CDT, DTG



Restoration courtesy of Ricky Canizares and Bill Marais CDT, DTG



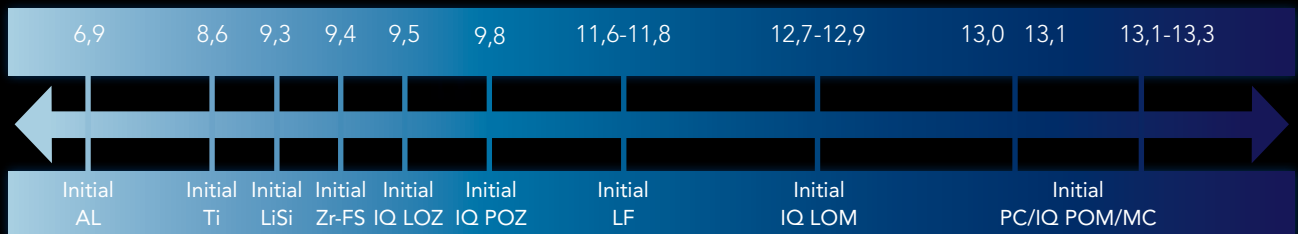
Restoration courtesy of Bill Marais CDT, DTG

FIRING PARAMETERS & CTE



	Preheating Temperature	Drying Time	Raise of Temperature	Vacuum	Final Temperature	Holding Time	Appearance
Wash Firing	430 C	4 min	45 C/min	+	760 C	1 min	Slightly shining
1. Dentin Firing	430 C	6 min	45 C/min	+	760 C	1 min	Slightly shining
2. Dentin Firing	430 C	6 min	45 C/min	+	750 C	1 min	Slightly shining
Glaze Firing with/without LP	450 C	4 min	45 C/min	-	760 C	1 min	Slightly shining

CTE





SET & CONTENTS



GC Initial LiSi Basic Set

Fulfills the need of the minimal layering technique on top of the LiSi frame.

- 6 main Vita⁺-shades (all 16 Vita⁺-shades available as refills)
- 1 Bleach Shade
- Enamels & Translucent
- Modeling Liquid
- Printed Shade Guide
- Technique Guide



Lithium Disilicate Substructure



Restoration courtesy of Jim Redden CDT, DTG

GC Initial LiSi Advanced Set

Fulfills the need of the more elaborate aesthetic layering technique on top of the LiSi frame.

- Insides
- Fluo dentines
- Enamel opalescent
- Cervical translucent
- Modeling Liquid
- Printed Shade Guide



GC Initial LiSi



Restoration courtesy of Jim Redden CDT, DTG



PRODUCT SKUs



875821 GC Initial LiSi, Dentin 20g, D-A1
875822 GC Initial LiSi, Dentin 20g, D-A2
875823 GC Initial LiSi, Dentin 20g, D-A3
875824 GC Initial LiSi, Dentin 20g, D-A3.5
875825 GC Initial LiSi, Dentin 20g, D-A4
875826 GC Initial LiSi, Dentin 20g, D-B1
875827 GC Initial LiSi, Dentin 20g, D-B2
875828 GC Initial LiSi, Dentin 20g, D-B3
875829 GC Initial LiSi, Dentin 20g, D-B4
875830 GC Initial LiSi, Dentin 20g, D-C1
875831 GC Initial LiSi, Dentin 20g, D-C2
875832 GC Initial LiSi, Dentin 20g, D-C3
875833 GC Initial LiSi, Dentin 20g, D-C4
875834 GC Initial LiSi, Dentin 20g, D-D2
875835 GC Initial LiSi, Dentin 20g, D-D3
875836 GC Initial LiSi, Dentin 20g, D-D4
875837 GC Initial LiSi, Enamel, 20g, E-57
875838 GC Initial LiSi, Enamel, 20g, E-58
875839 GC Initial LiSi, Enamel, 20g, E-59
875840 GC Initial LiSi, Enamel, 20g, E-60
875841 GC Initial LiSi, Clear Fluorescence, 20g, CL-F
875842 GC Initial LiSi, Translucent, 20g, TN Neutral
875843 GC Initial LiSi, Translucent, 20g, TO Opal
875844 GC Initial LiSi, Enamel Occlusal, 20g, EO-15
875845 GC Initial LiSi, Fluo Dentine, 20g, FD-91
875846 GC Initial LiSi, Fluo Dentine, 20g, FD-92
875847 GC Initial LiSi, Fluo Dentine, 20g, FD-93
875848 GC Initial LiSi, Enamel Opal, 20g, EOP-2
875849 GC Initial LiSi, Enamel Opal, 20g, EOP-3
875850 GC Initial LiSi, Enamel Opal, 20g EOP-4
875851 GC Initial LiSi, Cervical Translucent, 20g, CT-22
875852 GC Initial LiSi, Cervical Translucent, 20g, CT-23
875853 GC Initial LiSi, Cervical Translucent, 20g, CT-24
875854 GC Initial LiSi, Cervical Translucent, 20g, CT-25
875855 GC Initial LiSi, Inside, 20g, IN-41 Flamingo
875856 GC Initial LiSi, Inside, 20g, IN-42 Terracotta

875857 GC Initial LiSi, Inside, 20g, IN-43 Sun
875858 GC Initial LiSi, Inside, 20g, IN-44 Sand
875859 GC Initial LiSi, Inside, 20g, IN-45 Havanna
875860 GC Initial LiSi, Inside, 20g, IN-46 Brasil
875861 GC Initial LiSi, Inside, 20g, IN-47 Sienna
875862 GC Initial LiSi, Inside, 20g, IN-48 Kurkuma
875863 GC Initial LiSi, Inside, 20g, IN-49 Maracuja
875864 GC Initial LiSi, Inside, 20g, IN-50 Curry
875865 GC Initial LiSi, Inside, 20g, IN-51 Olive
875866 GC Initial LiSi, Correction Powder, 20g, COR
875867 GC Initial LiSi, Bleach Dentin, 20g, BL-D (White)
875868 GC Initial LiSi, Bleach Dentin, 20g, BL-E (Enamel)
875869 GC Initial LiSi, Translucent Modifier, 20g, TM-01
875870 GC Initial LiSi, Translucent Modifier, 20g, TM-02
875890 GC Initial LiSi, Modeling Liquid, 50mL

877086 GC Initial LiSi, Basic Set

INCLUDES:

GC Initial LiSi, Dentin, D-A1/DA-2/DA-3/DB-1/D-B2/D-C2, 20g
GC Initial LiSi, Bleach Enamel, BL-E, 20g
GC Initial LiSi, Enamel, E-57/E-58/E-59/E-60, 20g
GC Initial LiSi, Translucent Modifier, TM-01/TM-05 20g
GC Initial LiSi, Clear Fluorescence, CL-F, 20g
GC Initial, AL, ZR, TI / INvivo-INsitu Glaze, GL, 10g
GC Initial LiSi Translucent, TN/TO, 20g
GC Initial, AL, ZR, TI / INvivo-Insitu, Glaze Liquid, 25mL
GC Initial LiSi, Bleach Dentin, BLD-2, 20g
GC Initial LiSi, Modeling Liquid, 50mL
GC Initial LiSi Technical Manual
GC Initial LiSi, Shade Chart

877087 GC Initial LiSi, Advanced Set

INCLUDES:

GC Initial LiSi, Enamel Occlusal, EO-15 20g
GC Initial LiSi, Fluo-Dentin, FD-91/FD-92/FD-93, 20g
GC Initial LiSi, Enamel Opal, EOP-2/EOP-3/EOP-4, 20g
GC Initial LiSi, Cervical Translucent, CT-22/CT-23/CT-24/CT-25, 20g
GC Initial LiSi, Inside, IN-41/IN-42/IN-43/IN-44/IN-45/IN-46/IN-47/
IN-48/IN-49/IN-50/IN-51, 20g
GC Initial LiSi, Modeling Liquid, 50mL
GC Initial LiSi, Shade Chart

TOUCH *of* GENIUS™



SKU #608547 • 800.323.7063 • www.gcamerica.com • www.gcamerica.com/training • © 2015 GC America Inc.